



EMProbe Single probe, Articulated Robotic Arm Scanning System

Helping Developers
Achieve EMC Certification
First Time, Every Time

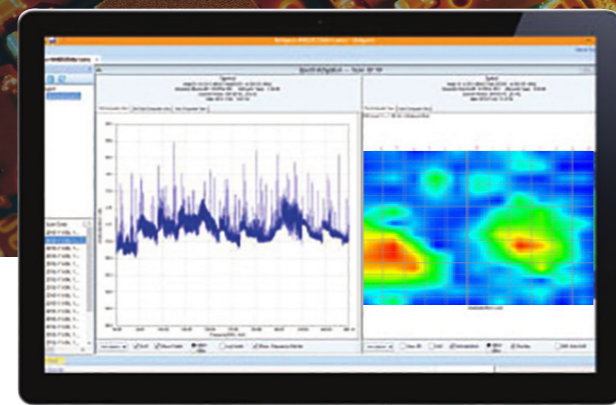
Captures near field data from
PCB's components sides , systems
& sub systems

Optional rail for DUT size of up to
1000 mm

Wide range of supported
Spectrum Analyzers

Set of Measurement probes up
to 8 GHz included

Various makes and models of robots ,
supported



TEST
ON-SITE



RESULTS IN
SECONDS



INCREASED
EFFICIENCY



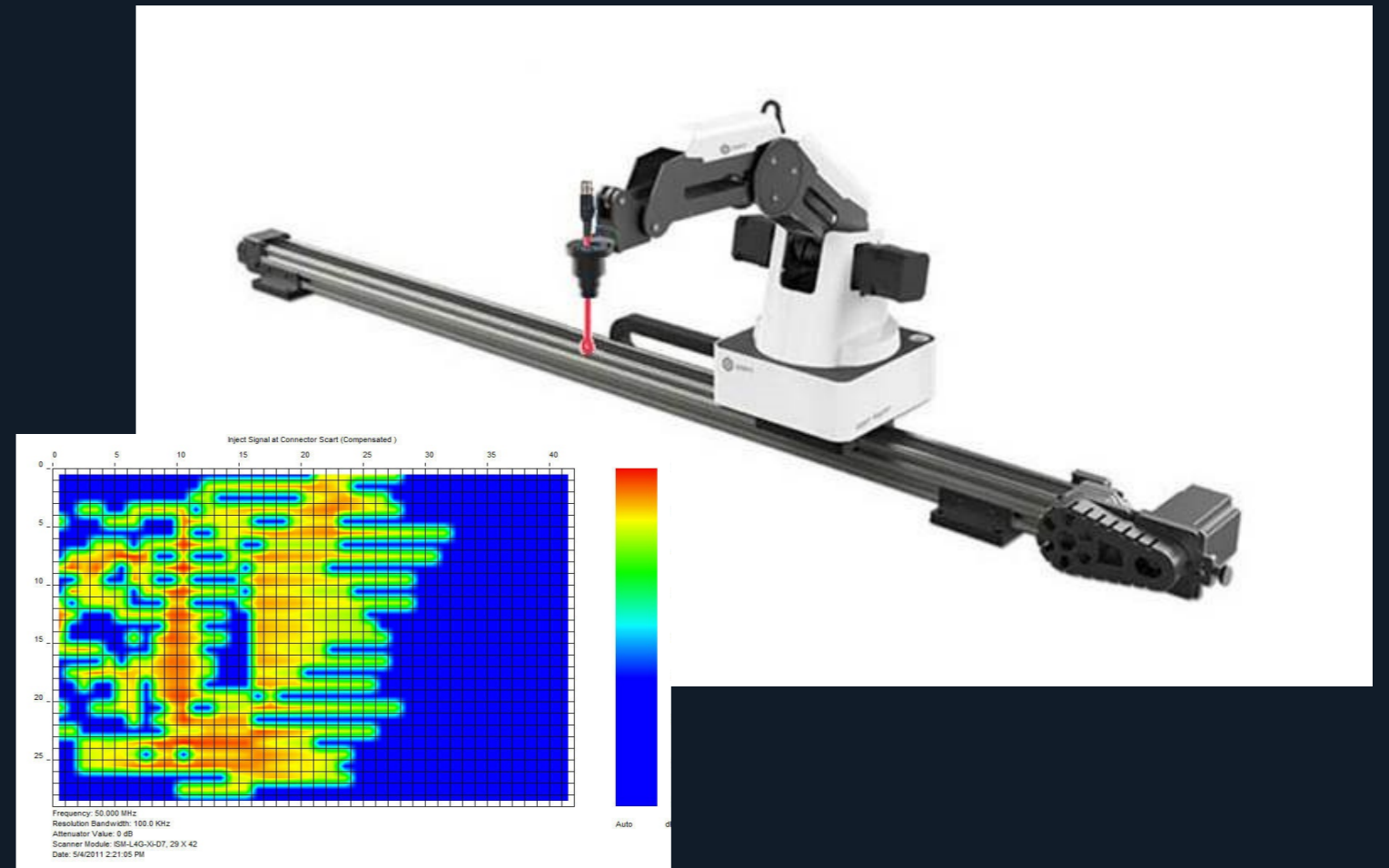
REDUCED
DESIGN TIME



REDUCED
COSTS

www.yictechnologies.com

support@yictechnologies.com



*Single probe, articulated robotic arm
Connect to Spectrum Analyzer and PC
Runs EMViewer software
Delivers repeatable and reliable results
Design changes immediate
EMProb diagnostics capabilities
reduces testing time*

*3D Precision Technology used to assist
high density board designers to use
off the shelf hand-held probes
and visualise the root causes
and potential EMC and EMI
problems during pre and post
EMC compliance testing*



Find out more at:
www.yictechnologies.com
support@yictechnologies.com

Y.I.C. Technologies G33, Centaur House,
Ancells Business Park, Ancells Road, Fleet,
Hampshire, GU51 2UJ, UK